

# The Horsley School Bag

## Friday 1st March 2024

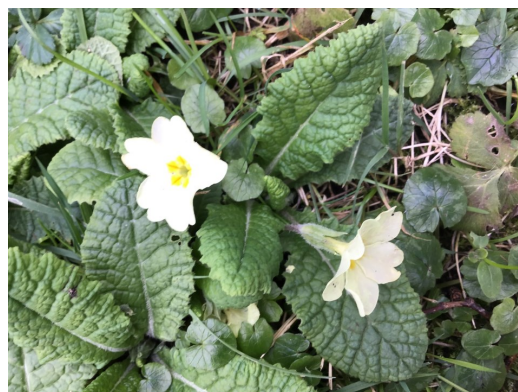
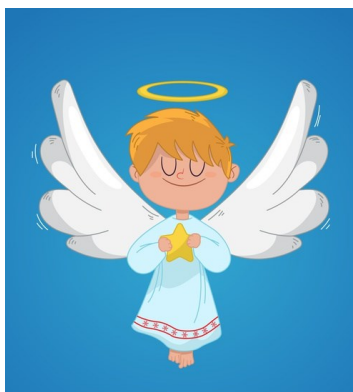
Newsletter 11 from Mr Price, *Head Teacher*

Our value this term is: **Compassion**



### Spring is a'coming!

The daffs are out (thank you to our ANGELS, Jess and Dan Robinson!) Foxes children have been learning about sharing information online. Ms Finlow (in her full capacity) emailed them to ask for photos showing some signs of Spring, so they kindly went outside to use the iPads to take some pics for the newsletter. Whilst out and about, they learned how to keep a picture in focus, how NOT to put their hand over the lens, and that they shouldn't take pictures of their friends to share online. The children then emailed a photograph back to Ms Finlow, who was most grateful and impressed (see below).



MUSIC MARK  
SCHOOL  
2022 - 2023



We're working  
towards Artsmark  
Awarded by Arts  
Council England





## Foxes Class celebrates Lunar New Year!



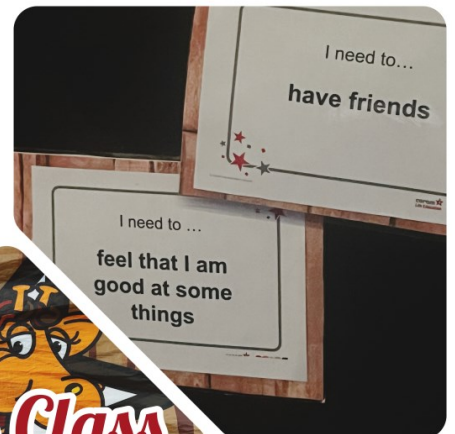
## SCARF:

### Safety, Caring, Achievement, Resilience, Friendship

Coram Life Education & SCARF is the UK's leading charity provider of PSHE and well-being education in primary schools.

Yesterday, a large tent appeared inside the church, and each class had a turn inside, learning through interactive videos, fun activities and meaningful discussions.

Harold the Giraffe puppet made his regular appearance too, teaching the children from his own experiences of the world!



**Owl's Class  
'Friends'**



**coram**   
Life Education  
**SCARF**



## Congratulations to our latest Special Award Winners

Rachel, Penny, Leo, Marcello, Harper, Leo, Teddy and Lucy

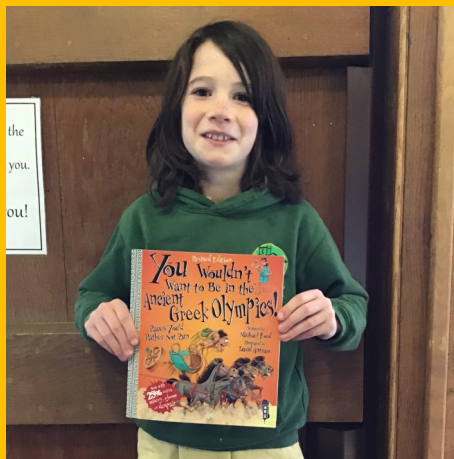


Sam, Summer, Billy, Emilia, Darsha, Noah, Toby and Billy





**The latest 'In it to win it' winners are Otto**



**Congratulations to everybody else who achieved 100% in their spellings this week!**

**Virtuoso!**

Thank you SO much to Verity, who played the piano so beautifully for us at the beginning of assembly last week. If any other children would like to play for us, just let us know!



### **Stroud Cross Country**

Six swift-legged runners took part in Atlas Games' cross country competition last week. Competing against schools from across the county, our children ran amazingly well, with grit and determination. We ended with three who were placed within the top ten, who will go through to the District Event.

James Jeffery (our old Sports Coach, who runs the event) commented on how impressed he was, and the impact of our school weekly fun run on children's speed and stamina!



### **Update:**

At the District Event last weekend, at Newent School, Marcello, Eloise and Kitty ran like the wind, coming 32nd, 5th and 2nd respectively out of over 70 children. Eloise also received an extra medal for running as part of the Year 5 girls' team. We are very proud of you all!



## Is your child in receipt of Pupil Premium?

We would like to make you aware of a change to the holiday Free School Meal (FSM) voucher scheme that Gloucestershire County Council is currently offering to families in Gloucestershire. Gloucestershire County Council is committed to supporting families with 1 week of vouchers (£15) for the Easter holiday and 1 week (£15) for the May half-term. Vouchers for the May half-term will be distributed at the same time as those for the Easter holiday period. Therefore, families who have signed up will receive a total of £30 per eligible child. The application and voucher roll out dates for this are below.

During 2024, there will be food and activity support available via the HAF programme (during Spring, Summer and Winter holiday periods). This is a separately funded scheme that provides the children who book and attend events with a meal. The HAF programme is not able to distribute food/supermarket vouchers. For more information on the HAF programme please visit their webpage here: [Holiday activities and food programme \(HAF\) | Gloucestershire County Council](#)

This Easter 2024 holiday period, Gloucestershire County Council will provide families in receipt of Free School Meals, who sign up to this offer, with vouchers to assist with food costs during the April (Easter) 2024 and May 2024 school holidays. Applications for holiday FSM vouchers for April 2024 and May 2024 (Easter and half term) holidays will be open from midday 27 February until midday on 12 March. We will be unable to accept any applications after this date. Vouchers for **both** holiday periods (1 week (£15) for Easter and 1 week (£15) for May half-term, a total of £30 per eligible child) will be distributed to families the week commencing 18 March 2024. Please encourage families to check their junk/spam folders during this period as sometimes the vouchers end up there.

If parents have not received their vouchers by 20 March 2024, please encourage them to email [childrensfund@gloucestershire.gov.uk](mailto:childrensfund@gloucestershire.gov.uk) **before the end of the holiday period (07 April 2024)**.

The scheme is for children in reception to year 11 who receive Pupil Premium (benefits-related) free school meals and attend a school in Gloucestershire. **We are unable to consider college and sixth form students, nor children who receive infant free school meals (available to all children from reception to year 2) - they are not eligible for this scheme.**

To find out more about the scheme and to apply, parents can visit our [FAQs | Gloucestershire County Council](#)

**Families who have signed up previously do not need to re-register for Easter 2024 and May 2024 holiday vouchers-** they will already have been included. Families that have previously signed up will need to contact us with any changes to their circumstances (e.g. if the number of children eligible increases or decreases). To ensure we reach all those who are eligible, we are encouraging parents that have not previously signed up, to sign up as soon as they can.

**Using vouchers** – vouchers need to be used will only be awarded once the parent has registered for the scheme and cannot be backdated. Vouchers are valid for 6 months, although should be used in the holiday period in which they are awarded. If vouchers are not claimed and have expired, they cannot be re-issued. Vouchers not received should be queried via email to [childrensfund@gloucestershire.gov.uk](mailto:childrensfund@gloucestershire.gov.uk) by the end of the holiday period.

**For any parents wishing to update details of an existing application, please ask them to email [childrensfund@gloucestershire.gov.uk](mailto:childrensfund@gloucestershire.gov.uk) so we can update their account, as details are not automatically updated.**

Kind regards

Emma Hobday

Children's Fund  
Children and Families Hub  
Gloucestershire County Council  
Shire Hall  
Westgate Street  
Gloucester  
GL1 2TG

**Email:** [childrensfund@gloucestershire.gov.uk](mailto:childrensfund@gloucestershire.gov.uk)

**Web:** [FAQs | Gloucestershire County Council](#)



## Diary Dates

### Spring Term 2024

#### Mar

- 8 World Book Day (see letter on website)
- 12 Parents' Evening 3.30-5.00pm
- 14 Parents' Evening 5.00-7.00pm
- 15 Comic Relief (see letter on website)
- 21 iRock Concert, 2.30pm in church - all welcome!
- 22 Easter Passion assembly. All welcome.  
End of Term 4, 12.15pm

### Summer Term 2024

#### April

- 12 Otters class swimming starts

#### May

- 3 May Day celebrations
- 6 May Day Bank Holiday
- 13 SATs Week (Year 6)
- 24 End of Term 5, 12.15pm

#### June

- 3 Multiplication Test Check Week (Year 4)
- 10 Phonics Screening Week (Year 1)
- 25 New Reception parent info evening, 6.00pm
- 27 Parent Drop-in evening, 3.30-5.00pm

#### July

- 1-4 Owls class residential to Viney Hill
- 9 KS2 End of Year production, 6.00pm
- 10 KS2 End of Year production, 6.00pm
- 12 Sports Day
- 16 Move-up morning
- 17 Sports Day (reserve date)
- 19 Leavers' Assembly, 11.00am. All welcome.  
End of Term 6, 12.15pm  
Annual water fight on the field  
& FHS Garden Party



## Term Dates



### 2023/2024 Academic Year Dates

**Term 1:** Wed 6 Sep - Fri 27 Oct 2023

**Term 2:** Tues 7 Nov - Fri 22 Dec 2023

**Term 3:** Tue 9 Jan - Fri 9 Feb 2024

**Term 4:** Mon 19 Feb - Fri 22 Mar 2024

**Term 5:** Tue 9 Apr - Fri 24 May 2024

**Term 6:** Mon 3 Jun - Fri 19 July 2024

### INSET days this year

Mon 4 Sep 2023

Tue 5 Sep 2023

Mon 6 Nov 2023

Mon 8 Jan 2024

Mon 22 July 2024



See next page for calendar dates for 23-24 and 24-25

### Office hours

Please be aware that the office is open from 8.30am - 4.00pm daily; any issues need to be addressed within office hours. There may be staff in school outside of these hours (for example, engaged in meetings), but the school is closed.



### Advance Notice:

From the end of Term 3 (Feb 9th), we will be finishing school at 12.15pm at the end of every short term, to allow time for staff training and preparation. Please see the above diary dates for the exact dates.

## Safeguarding

### Attendance and Safeguarding

Below are the attendance figures for all classes for this academic year to date.

Our Local Authority attendance threshold for persistent absence is 95%.

	Attendance (%)	Lates (after 8.55am)	Unauthorised Absence
Foxes	97.37	1	0
Badgers	95.83	5	0
Otters	86.90	4	1
Owls	96.92	2	2

# Term Dates and INSET Days 2023-2024

## SCHOOL TERMS AND HOLIDAYS 2023/24



SEPTEMBER					OCTOBER					NOVEMBER						
Mon	4	11	18	25	Mon	2	9	16	23	30	Mon	6	13	20	27	
Tues	5	12	19	26	Tues	3	10	17	24	31	Tues	7	14	21	28	
Wed	6	13	20	27	Wed	4	11	18	25	Wed	1	8	15	22	29	
Thur	7	14	21	28	Thur	5	12	19	26	Thur	2	9	16	23	30	
Fri	1	8	15	22	29	Fri	6	13	20	27	Fri	3	10	17	24	
Sat	2	9	16	23	30	Sat	7	14	21	28	Sat	4	11	18	25	
Sun	3	10	17	24	Sun	1	8	15	22	29	Sun	5	12	19	26	
DECEMBER					JANUARY					FEBRUARY						
Mon	4	11	18	25	Mon	1	8	15	22	29	Mon	5	12	19	26	
Tues	5	12	19	26	Tues	2	9	16	23	30	Tues	6	13	20	27	
Wed	6	13	20	27	Wed	3	10	17	24	31	Wed	7	14	21	28	
Thur	7	14	21	28	Thur	4	11	18	25	Thur	1	8	15	22	29	
Fri	1	8	15	22	29	Fri	5	12	19	26	Fri	2	9	16	23	
Sat	2	9	16	23	30	Sat	6	13	20	27	Sat	3	10	17	24	
Sun	3	10	17	24	31	Sun	7	14	21	28	Sun	4	11	18	25	
MARCH					APRIL					MAY						
Mon	4	11	18	25	Mon	1	8	15	22	29	Mon	6	13	20	27	
Tues	5	12	19	26	Tues	2	9	16	23	30	Tues	7	14	21	28	
Wed	6	13	20	27	Wed	3	10	17	24	Wed	1	8	15	22	29	
Thur	7	14	21	28	Thur	4	11	18	25	Thur	2	9	16	23	30	
Fri	1	8	15	22	29	Fri	5	12	19	26	Fri	3	10	17	24	31
Sat	2	9	16	23	30	Sat	6	13	20	27	Sat	4	11	18	25	
Sun	3	10	17	24	31	Sun	7	14	21	28	Sun	5	12	19	26	
JUNE					JULY					AUGUST						
Mon	3	10	17	24	Mon	1	8	15	22	29	Mon	5	12	19	26	
Tues	4	11	18	25	Tues	2	9	16	23	30	Tues	6	13	20	27	
Wed	5	12	19	26	Wed	3	10	17	24	31	Wed	7	14	21	28	
Thur	6	13	20	27	Thur	4	11	18	25	Thur	1	8	15	22	29	
Fri	7	14	21	28	Fri	5	12	19	26	Fri	2	9	16	23	30	
Sat	1	8	15	22	29	Sat	6	13	20	27	Sat	3	10	17	24	31
Sun	2	9	16	23	30	Sun	7	14	21	28	Sun	4	11	18	25	

Term Time		Holidays	
Bank Holiday		Inset Days	


Term 1: Mon 4 <sup>th</sup> Sept – Fri 27 <sup>th</sup> Oct 2023	40 days
Term 2: Mon 6 <sup>th</sup> Nov – Fri 22 <sup>nd</sup> Dec 2023	35 days
Term 3: Mon 8 <sup>th</sup> Jan - Fri 9 <sup>th</sup> Feb 2024	25 days
Term 4: Mon 19 <sup>th</sup> Feb – Fri 22 <sup>nd</sup> Mar 2024	25 days
Term 5: Mon 8 <sup>th</sup> April – Fri 24 <sup>th</sup> May 2024	34 days
Term 6: Mon 3 <sup>rd</sup> June – Mon 22 <sup>nd</sup> July 2024	36 days
<b>Total</b>	<b>195 days*</b>

Christmas Bank Holidays	25 <sup>th</sup> December 2023
	26 <sup>th</sup> December 2023
New Year Bank Holiday	1 <sup>st</sup> January 2024
Good Friday	29 <sup>th</sup> March 2024
Easter Monday	1 <sup>st</sup> April 2024
Early May Bank Holiday	6 <sup>th</sup> May 2024
Spring Bank Holiday	27 <sup>th</sup> May 2024
Summer Bank Holiday	26 <sup>th</sup> August 2024

\*195 days are defined as "School days". In the school year 2023/24 pupils must attend for 190 days. Schools may decide individually or collectively which 5 days in the year are INSET or non-contact days (days pupils do not need to attend).

Please Note: Schools considering alternative dates or considering changes to their school opening times may wish to contact our Transport Team to discuss transport implications and contact local childcare providers to discuss what impact this could have.

Term Dates and INSET Days 2024-2025

SCHOOL TERMS AND HOLIDAYS										 Gloucestershire COUNTY COUNCIL																					
2024/25																															
SEPTEMBER					OCTOBER					NOVEMBER																					
Mon		2	9	16	23	30	Mon		7	14	21	28	Mon		4	11	18	25													
Tues		3	10	17	24		Tues	1	8	15	22	29	Tues		5	12	19	26													
Wed		4	11	18	25		Wed	2	9	16	23	30	Wed		6	13	20	27													
Thur		5	12	19	26		Thur	3	10	17	24	31	Thur		7	14	21	28													
Fri		6	13	20	27		Fri	4	11	18	25		Fri	1	8	15	22	29													
Sat		7	14	21	28		Sat	5	12	19	26		Sat	2	9	16	23	30													
Sun	1	8	15	22	29		Sun	6	13	20	27		Sun	3	10	17	24														
DECEMBER					JANUARY					FEBRUARY																					
Mon		2	9	16	23	30	Mon		6	13	20	27	Mon		3	10	17	24													
Tues		3	10	17	24	31	Tues		7	14	21	28	Tues		4	11	18	25													
Wed		4	11	18	25		Wed	1	8	15	22	29	Wed		5	12	19	26													
Thur		5	12	19	26		Thur	2	9	16	23	30	Thur		6	13	20	27													
Fri		6	13	20	27		Fri	3	10	17	24	31	Fri		7	14	21	28													
Sat		7	14	21	28		Sat	4	11	18	25		Sat	1	8	15	22														
Sun	1	8	15	22	29		Sun	5	12	19	26		Sun	2	9	16	23														
MARCH					APRIL					MAY																					
Mon		3	10	17	24	31	Mon		7	14	21	28	Mon		5	12	19	26													
Tues		4	11	18	25		Tues	1	8	15	22	29	Tues		6	13	20	27													
Wed		5	12	19	26		Wed	2	9	16	23	30	Wed		7	14	21	28													
Thur		6	13	20	27		Thur	3	10	17	24		Thur	1	8	15	22	29													
Fri		7	14	21	28		Fri	4	11	18	25		Fri	2	9	16	23	30													
Sat	1	8	15	22	29		Sat	5	12	19	26		Sat	3	10	17	24	31													
Sun	2	9	16	23	30		Sun	6	13	20	27		Sun	4	11	18	25														
JUNE					JULY					AUGUST																					
Mon		2	9	16	23	30	Mon		7	14	21	28	Mon		4	11	18	25													
Tues		3	10	17	24		Tues	1	8	15	22	29	Tues		5	12	19	26													
Wed		4	11	18	25		Wed	2	9	16	23	30	Wed		6	13	20	27													
Thur		5	12	19	26		Thur	3	10	17	24	31	Thur		7	14	21	28													
Fri		6	13	20	27		Fri	4	11	18	25		Fri	1	8	15	22	29													
Sat		7	14	21	28		Sat	5	12	19	26		Sat	2	9	16	23	30													
Sun	1	8	15	22	29		Sun	6	13	20	27		Sun	3	10	17	24	31													
Term Time				Holidays																											
Bank Holiday				INSET Days																											
				Half Days																											
Term 1: Mon 2 <sup>nd</sup> Sept – Fri 25 <sup>th</sup> Oct 2024					40 days					Christmas Bank Holidays					25 <sup>th</sup> December 2024																
Term 2: Mon 4 <sup>th</sup> Nov – Fri 20 <sup>th</sup> Dec 2024					35 days										26 <sup>th</sup> December 2024																
Term 3: Mon 6 <sup>th</sup> Jan - Fri 14 <sup>th</sup> Feb 2025					30 days					New Year Bank Holiday					1 <sup>st</sup> January 2025																
Term 4: Mon 24 <sup>th</sup> Feb – Fri 11 <sup>th</sup> Apr 2025					35 days					Good Friday					18 <sup>th</sup> April 2025																
Term 5: Mon 28 <sup>th</sup> April – Fri 23 <sup>rd</sup> May 2025					19 days					Easter Monday					21 <sup>st</sup> April 2025																
Term 6: Mon 2 <sup>nd</sup> June – Mon 21 <sup>st</sup> July 2025					36 days					Early May Bank Holiday					5 <sup>th</sup> May 2025																
															Spring Bank Holiday					26 <sup>th</sup> May 2025											
															Summer Bank Holiday					25 <sup>th</sup> August 2025											



